

SECURITY LIGHT CONSTRUCTION/OPERATION

B3E091401077T07

Construction

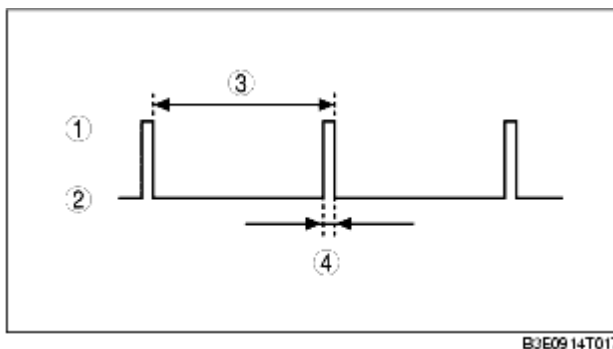
- Allows visual confirmation of immobilizer system operation.
- If any malfunction is detected in the immobilizer system, the malfunction location can be verified by the security light flashing pattern.

Note

- If there is security light system malfunction, DTCs may not be properly displayed. Always use the WDS or equivalent to verify DTCs.

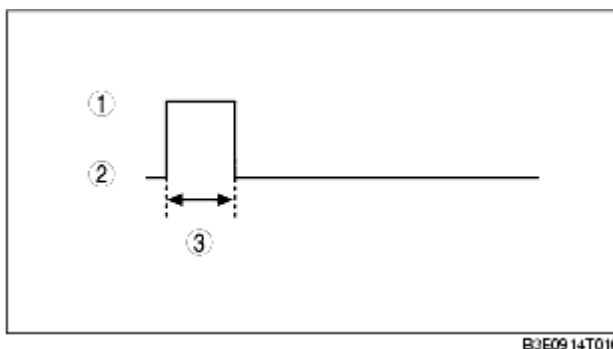
Operation

- When the immobilizer system is operating, the security light flashes repeatedly **0.1 s every 2 s**.



1	Illuminated
2	Goes out
3	Approx. 2 s
4	Approx. 0.1 s

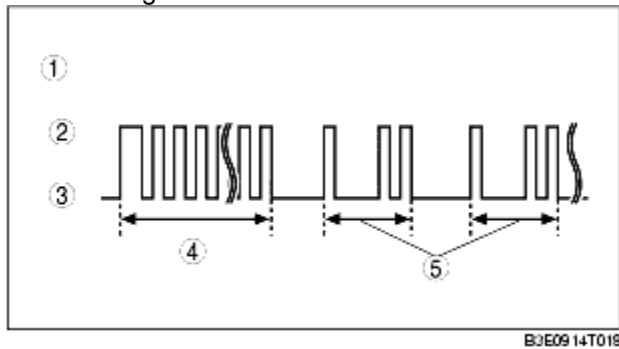
- When the immobilizer system is released normally, the security light illuminates **for 3 s** and then goes off when the ignition switch is turned to the ON position.



1	Illuminated
2	Goes out
3	Approx. 3 s

• If the immobilizer system is not released normally (malfunction detected by the malfunction diagnosis function), the security light displays a DTC. If this occurs, the security light flashes or illuminates **for 1 min** and then displays the DTC when the ignition switch is turned to the ON position.

- DTC 16 and lower: Flashes
- DTC 21 and higher: Illuminated



1	Examples: DTC 12 detected by the malfunction diagnosis function
2	Illuminated
3	Goes out
4	Approx. 1 min
5	DTC 12

Note

- The security light flashes to display the DTC **10 times**.
- If multiple DTCs that can be confirmed with the security light are detected, only the DTC with the lowest number of those detected will be displayed by the security light.